

# GD&ASSOCIATES

EXCLUSIVE LISTINGS | KEROBOKAN EXCLUSIVES | SOPHISTICATED BIOPHILIC HOUSE



## SOPHISTICATED BIOPHILIC HOUSE

UMALAS, KEROBOKAN

PRICE USD	PRICE IDR	OWNERSHIP
USD 499,000	IDR 9,025,000,000	Freehold
.....		
BEDS / BATHS	LEVEL	YEAR BUILT
3 / 3.5	2	2026
.....		
LAND SIZE +/-	LIVING SIZE +/-	DESIGN
150 sqm	129 sqm	
1.50 are	1.29 are	
.....		
CERTIFICATES	ZONING	VIEWS
PBG	Mix Zoned (C-1)	Pool landscape and biophilic greenery

*This two-level property, designed by Ady Putra — a visionary local architect — harmoniously integrates with Bali's breathtaking natural surroundings. Through a modern approach, the design demonstrates a dedication to combining contemporary architectural principles with the beauty of the environment. Ady Putra's focus on fusing functional design with innovative architecture results in a structure that offers an immersive, captivating spatial experience.*

*Set on a 150 sqm plot with 129.11 sqm of living space, the property features 3 bedrooms and is just a short stroll from Revolver Umalas, with a 10-minute drive to the nearest beaches of Seminyak or Berawa.*

*At first sight, the home boasts a monolithic, intriguing façade. Step inside, however, and you're greeted by a warm minimalism that feels mysterious yet surprisingly cozy. The design seamlessly merges with its lush surroundings, creating an effortless flow between indoor and outdoor living. Ideal for families looking to downsize without compromising on taste and finesse, this property is a true haven for the discerning few.*

**GD&ASSOCIATES** by Gilles Demunter®

©2021 PT SURGA TROPIS HIDUP. ALL RIGHTS RESERVED

www.gillesdemunter.com | info@gillesdemunter.com | +(62)819-99-971-591  
GD Headquarters @ Made's Warung Unit #5, Jalan Raya Seminyak,  
Seminyak, Kecamatan Kuta, Kabupaten Badung, Bali 80361, Indonesia.

# GD&ASSOCIATES



## OTHER FEATURES

## NEARBY

### Attractions

Batu Belig Beach  
Batu Bolong Beach  
Berawa Beach  
Canggu Beach  
Echo Beach  
Mai Main Playground  
Nelayan Beach  
Petitenget Beach

### Shopping

KIM SOO  
Limited Edition  
Bali Buda Canggu  
Bali Buda Umalas  
BIASA  
Bintang Supermarket  
Bokashi  
Heveya Organic Latex Mattress & Bedding Specialist  
Soil Food Temple

### Culture

Desa Seni  
Deus Ex Machina  
FINNS  
Liga Tennis  
Nirvana  
Potato Head  
Samadi  
Sanctuary  
Soham Wellness

### Food & Drinks

Amolas Cafe  
BRAUD Cafe  
Desa Kitsune  
Doppio Cafe Pink  
Gusto Gelato  
Indigo  
KONG  
Mauri Italian Contemporary Cuisine  
Okamura Japanese Resto  
Riviera Seafood-Wine Bar  
Sangsaka

### Public Facilities

Canggu Community School  
Caterpillar School  
Montessori School  
Obsidian  
Semer Vet  
Soccer Field  
Soori Dog Grooming

GD&ASSOCIATES by Gilles Demunter®

©2021 PT SURGA TROPIS HIDUP. ALL RIGHTS RESERVED

www.gillesdemunter.com | info@gillesdemunter.com | +(62)819-99-971-591  
GD Headquarters @ Made's Warung Unit #5, Jalan Raya Seminyak,  
Seminyak, Kecamatan Kuta, Kabupaten Badung, Bali 80361, Indonesia.

# GD&ASSOCIATES

## OVERVIEW

EXCLUSIVE

OWNERSHIP: FREEHOLD

STATUS: NEWLY BUILT

LAND SIZE: 150 sqm / 1.50 are

LIVING SIZE: 129 sqm / 1.29 are

LEVEL: 2

BED / BATH: 3 / 3.5

VIEWS: POOL LANDSCAPE AND BIOPHILIC  
GREENERY

FURNISHING: FULLY-FURNISHED

INCLUDE STAFF: DOES NOT INCLUDE STAFF

PAYMENT TERM: NO

CERTIFICATION: PBG

ZONING: MIX ZONED (C-1)

## AMENITIES

## OTHERS

## NEARBY

BATU BELIG BEACH

BATU BOLONG BEACH

BERAWA BEACH

CANGGU BEACH

ECHO BEACH

MAI MAIN PLAYGROUND

NELAYAN BEACH

PETTENGET BEACH

KIM SOO

LIMITED EDITION

BALI BUDA CANGGU

BALI BUDA UMALAS

BIASA

BINTANG SUPERMARKET

BOKASHI

DESA SENI

AMOLAS CAFE

CANGGU COMMUNITY SCHOOL

**GD&ASSOCIATES** *by Gilles Demunter*<sup>®</sup>

©2021 PT SURGA TROPIS HIDUP. ALL RIGHTS RESERVED

www.gillesdemunter.com | info@gillesdemunter.com | +(62)819-99-971-591  
GD Headquarters @ Made's Warung Unit #5, Jalan Raya Seminyak,  
Seminyak, Kecamatan Kuta, Kabupaten Badung, Bali 80361, Indonesia.

# GD&ASSOCIATES



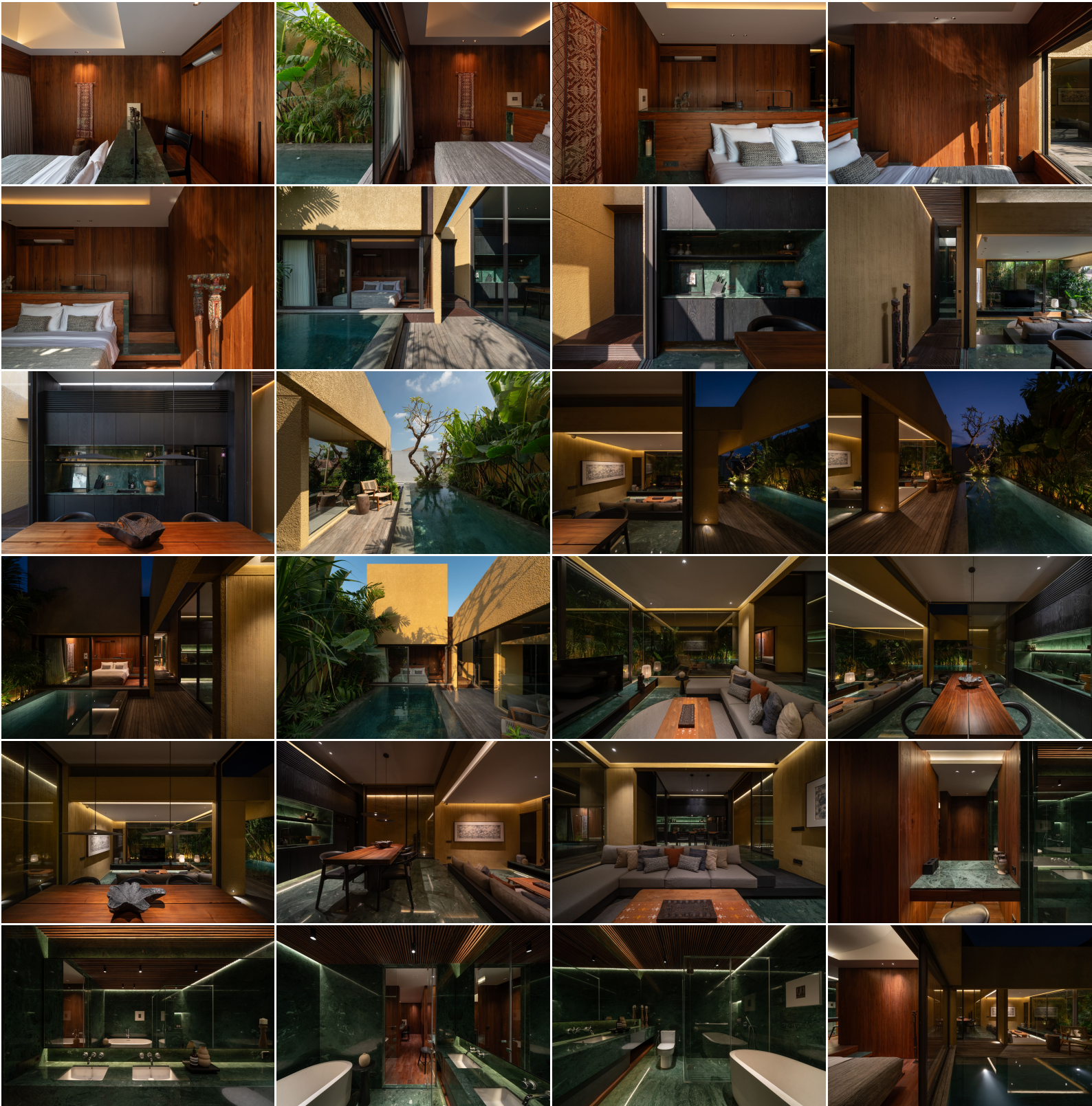
GD&ASSOCIATES *by Gilles Demunter*®

©2021 PT SURGA TROPIS HIDUP. ALL RIGHTS RESERVED

[www.gillesdemunter.com](http://www.gillesdemunter.com) | [info@gillesdemunter.com](mailto:info@gillesdemunter.com) | +(62)819-99-971-591

GD Headquarters @ Made's Warung Unit #5, Jalan Raya Seminyak, Seminyak, Kecamatan Kuta, Kabupaten Badung, Bali 80361, Indonesia.

# GD&ASSOCIATES



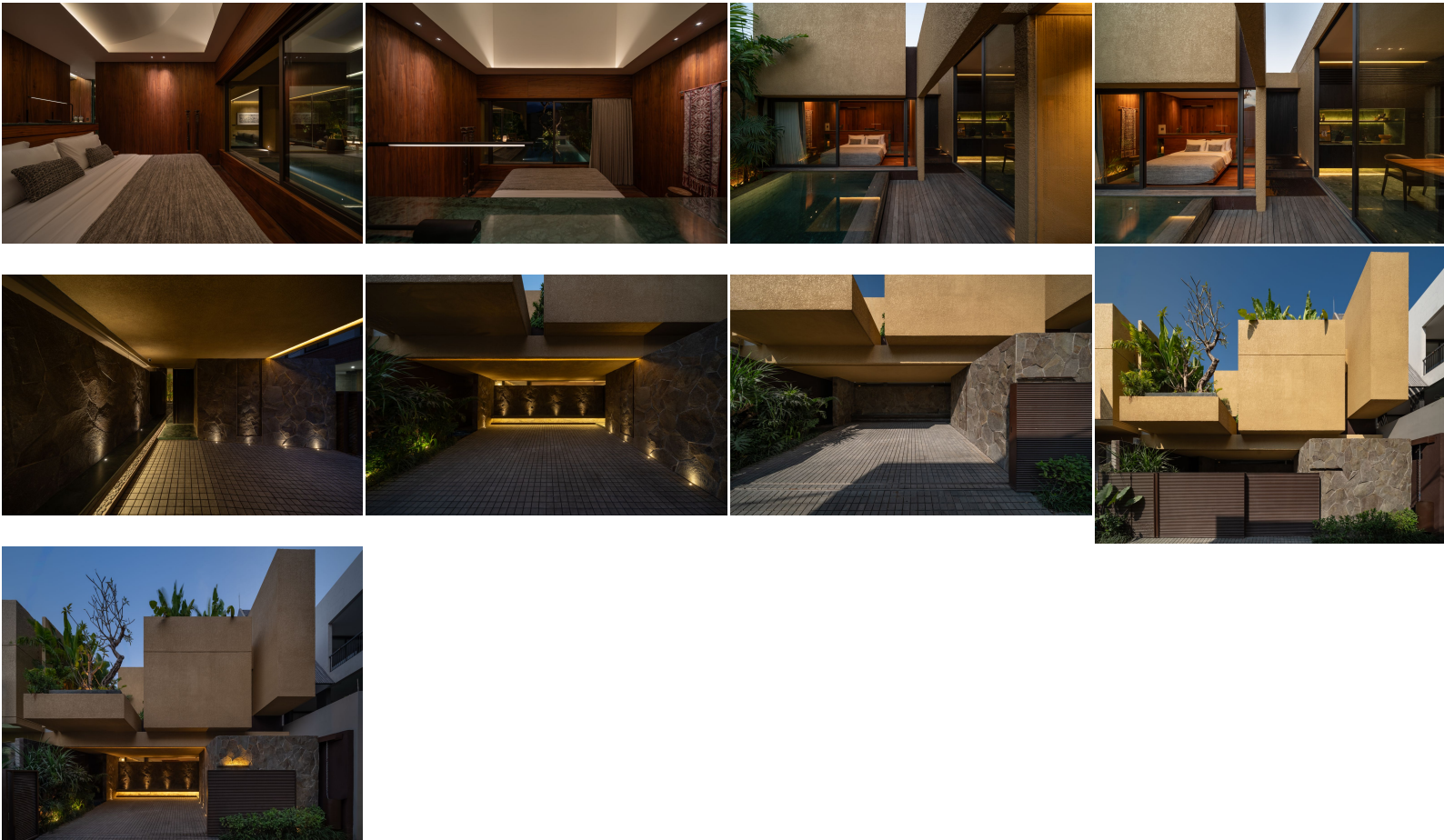
GD&ASSOCIATES *by Gilles Demunter*<sup>®</sup>

©2021 PT SURGA TROPIS HIDUP. ALL RIGHTS RESERVED

[www.gillesdemunter.com](http://www.gillesdemunter.com) | [info@gillesdemunter.com](mailto:info@gillesdemunter.com) | +(62)819-99-971-591

GD Headquarters @ Made's Warung Unit #5, Jalan Raya Seminyak, Seminyak, Kecamatan Kuta, Kabupaten Badung, Bali 80361, Indonesia.

# GD&ASSOCIATES



**GD&ASSOCIATES** *by Gilles Demunter*®

©2021 PT SURGA TROPIS HIDUP. ALL RIGHTS RESERVED

[www.gillesdemunter.com](http://www.gillesdemunter.com) | [info@gillesdemunter.com](mailto:info@gillesdemunter.com) | +(62)819-99-971-591  
GD Headquarters @ Made's Warung Unit #5, Jalan Raya Seminyak,  
Seminyak, Kecamatan Kuta, Kabupaten Badung, Bali 80361, Indonesia.